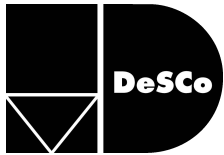


i65 SERIES THERMAL WINDOW

DESCRIPTION	PROJECT-OUT	CASEMENT	PROJECT-IN
AAMA Designation ASTM	P-AW100	C-AW100	P-AW100
F588 (Forced Entry)	Grade 10	Grade 10	Grade 10
Air Infiltration	<0.1 CFM	<0.1 CFM	<0.1 CFM
Water Resistance Maximum	15 psf	15 psf	15 psf
Sash Size Operating	60" x 36"	36" x 60"	60" x 36"
Hardware	Cam handles 4 bar hinges	Cam Handles 4 bar hinges	Cam handles 4 bar hinges
Optional Screens	Wicket screens Fiberglass or aluminum mesh	Extruded frame Fiberglass or aluminum mesh	Extruded frame Fiberglass or aluminum mesh
Frame Depth	2 9/16" (65mm)		
Typical Material Thickness	0.094" with tubular design		
Frame Construction	Miter - crimp & epoxy weld on frames Mortise & tenon on mullions		
Sash Construction Glazing	Miter - crimp & epoxy weld		
Thickness	1/4" and 1"		

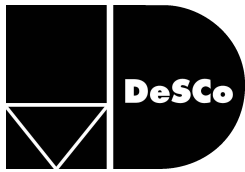


i65 SERIES

HARDWARE GUIDE

DESCRIPTION	PROJECT-IN	PROJECT-OUT	CASEMENT
Cam Handles	Standard	Standard	Standard
Custodial Locks	Optional	Optional	Optional
Spring Latch	Optional		
Pole Ring Cam Handles	Optional		
Pushbars		Optional	
Locking Handles	Optional	Optional	Optional
4 Bar Hinges	Standard	Standard	Standard
Roto Operators		Optional	Optional
Butt Hinges			Optional
Egress Hardware			Optional
Friction Adjustors	Optional	Optional	Optional
Limited Opening Device	Optional	Optional	Optional
Limit Stops	Optional	Optional	Optional
Screens	Optional	Optional	Optional
ADA Hardware	Optional	Optional	Optional

To determine the recommended number of locks or combinations of locking and hinging hardware, contact DeSCo Technical Support for assistance.



i65 SERIES

SIZE LIMITATIONS

	MINIMUM SIZE	MAXIMUM SIZE
Project-in vent with cam handles	14" wide x 14" high	60" wide x 36" high

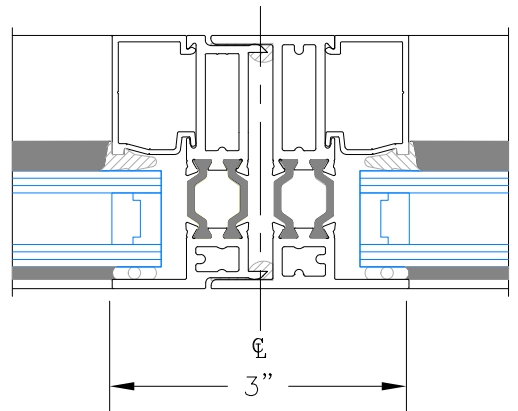
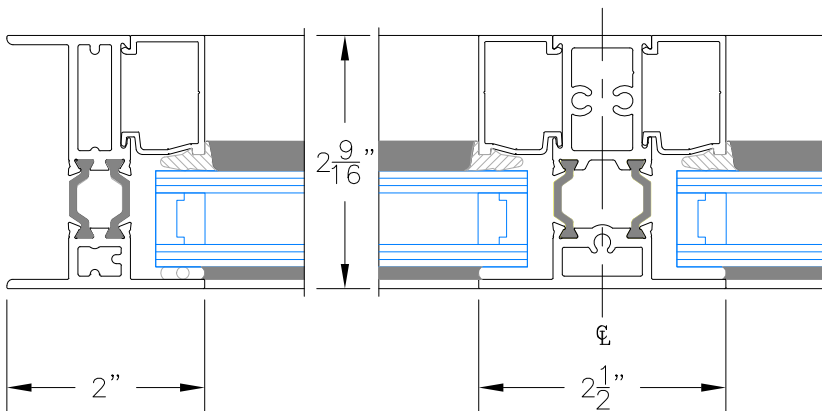
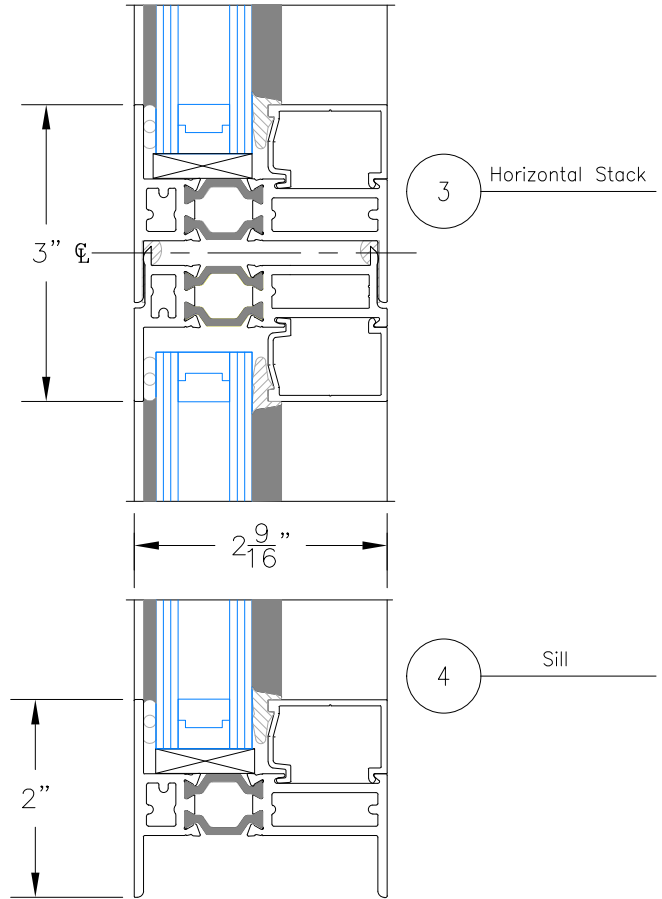
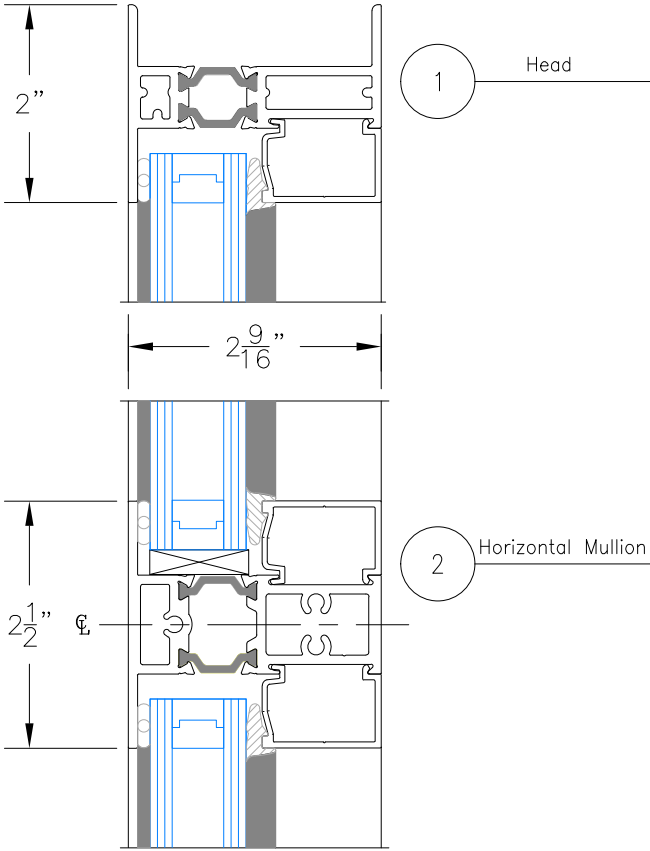
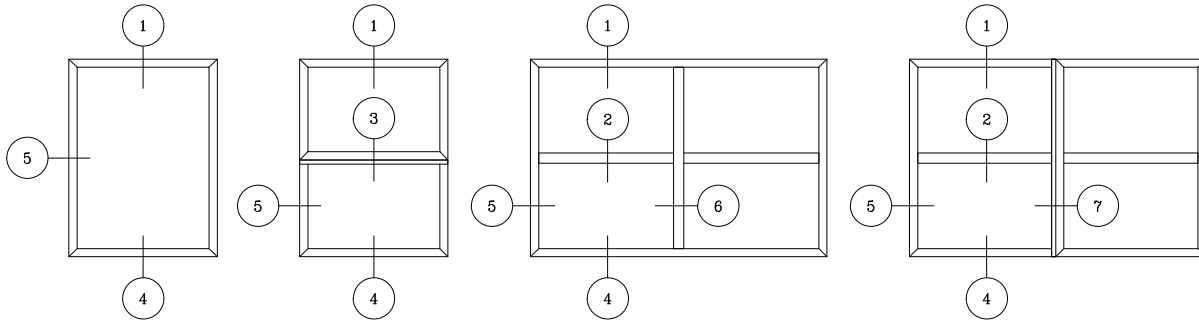
	MINIMUM SIZE	MAXIMUM SIZE
Project-out vent with cam handles	14" wide x 14" high	60" wide x 36" high
Project-out vent with pushbars	23" wide x 14" high	60" wide x 36" high
Project-out vent with roto operators	24" wide x 14" high	60" wide x 36" high

	MINIMUM SIZE	MAXIMUM SIZE
Casement vent with roto operators	20" wide x 24" high	36" wide x 60" high

Egress vent

	WIDTH	HEIGHT	
For 20" clear opening width	27 1/2"	45"	5.7 square foot of opening
For 22" clear opening width	29 1/2"	42"	5.7 square foot of opening
For 24" clear opening width	31 1/2"	39"	5.7 square foot of opening

Consult your DeSCO representative for vent size limitations due to hardware limitations.



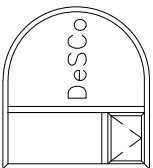
5 Jamb

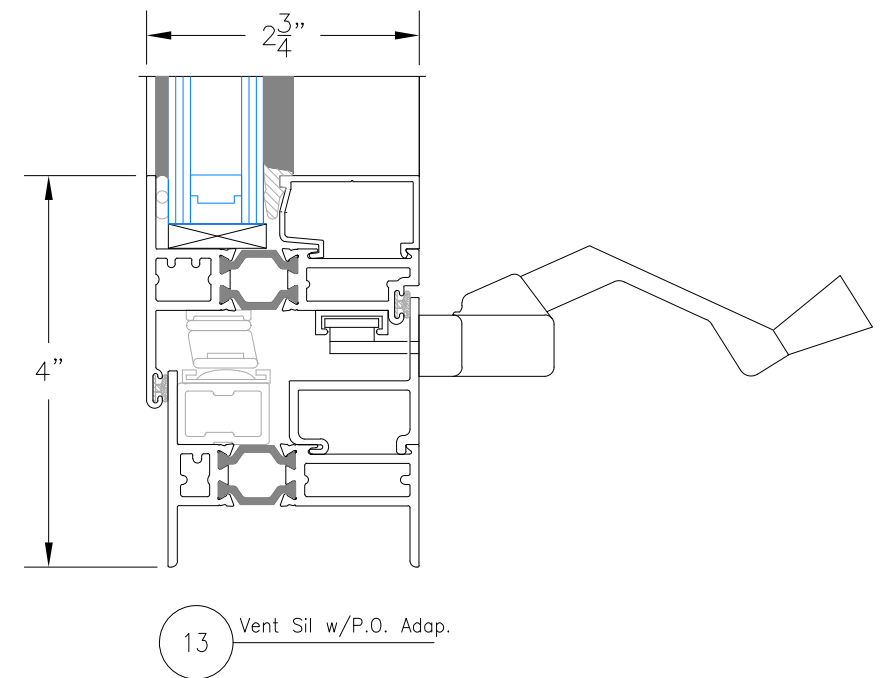
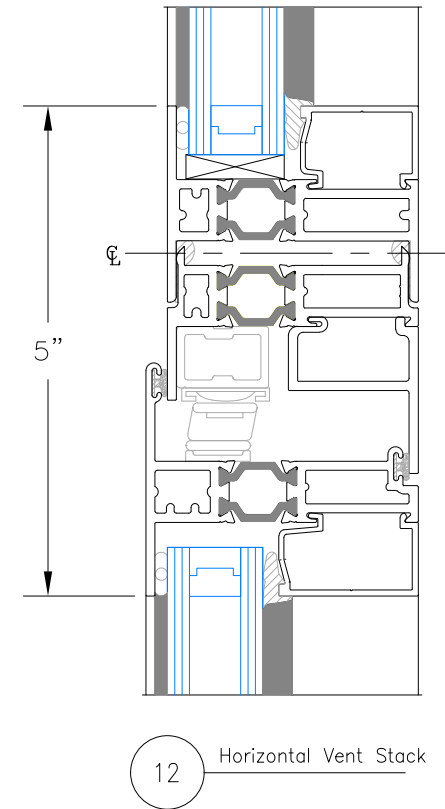
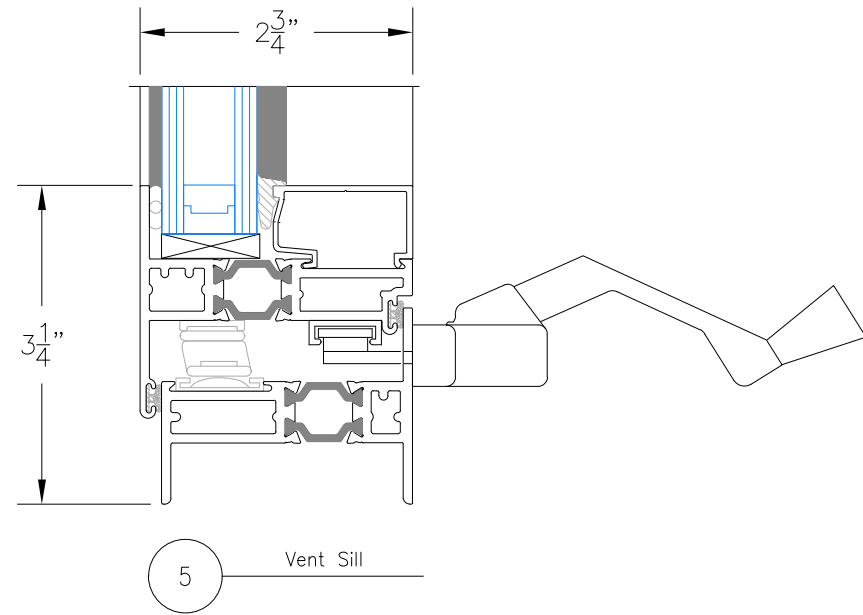
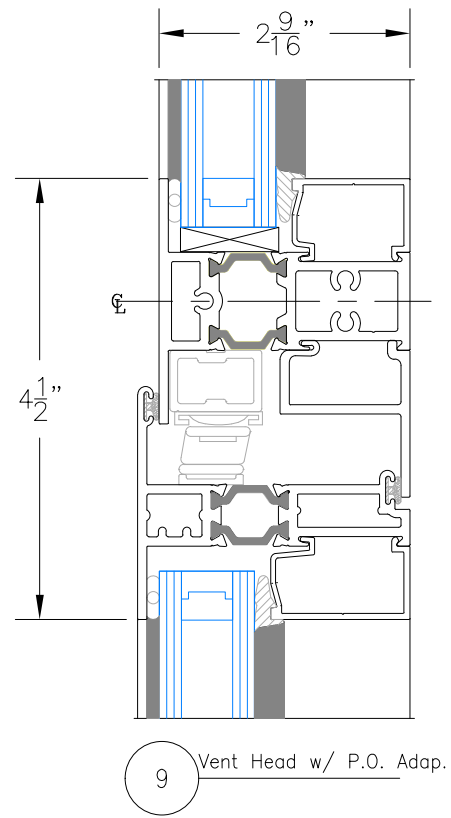
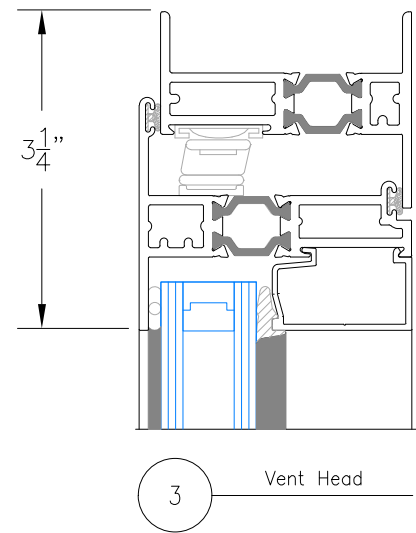
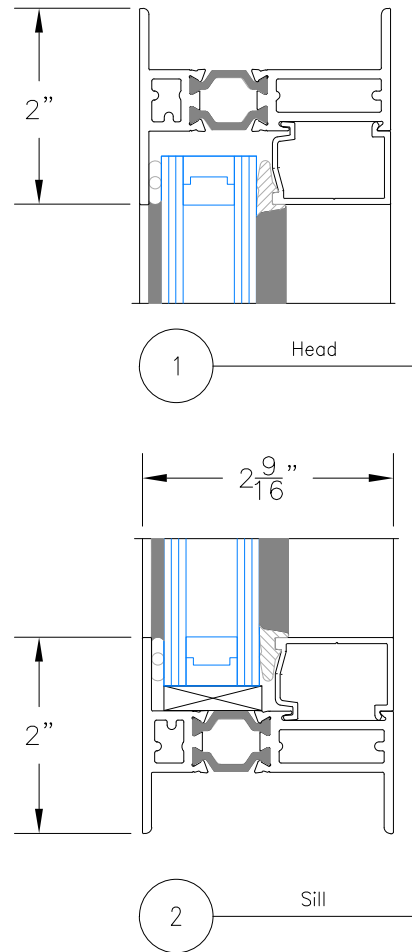
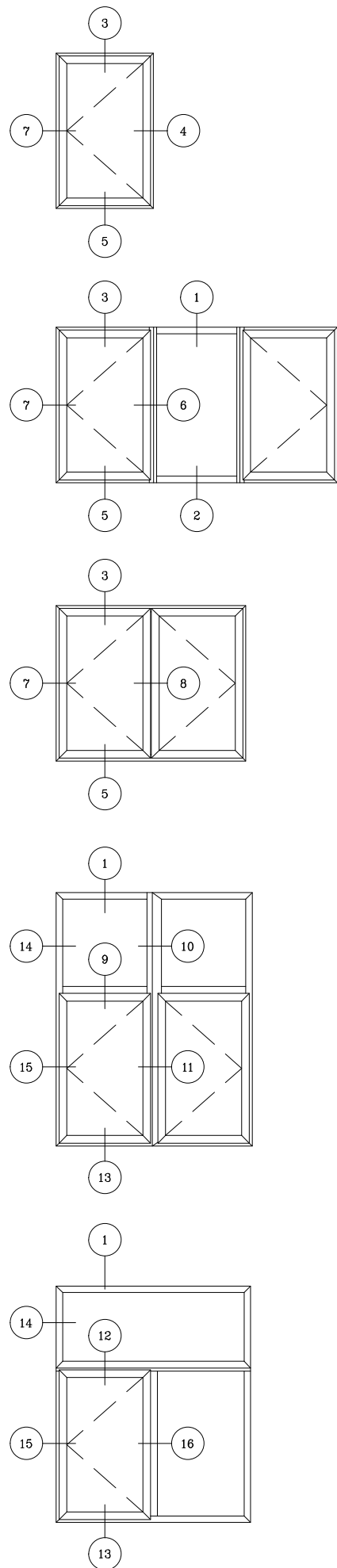
6 Vertical Mullion

7 Vertical Stack

i65 SERIES THERMAL WINDOW
FIXED/STATIONARY

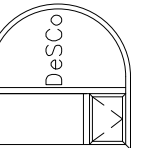
DeSCO Architectural, Inc.
716 3rd Street SE
De Smet, SD 57231
Ph. 605-854-9126 Fax: 605-854-9127
800-952-5534
www.descoarc.com

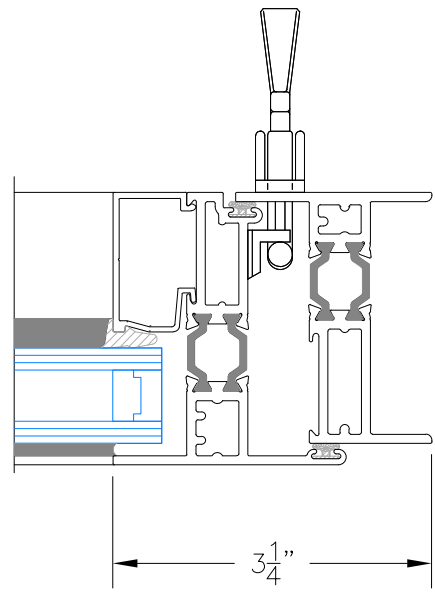




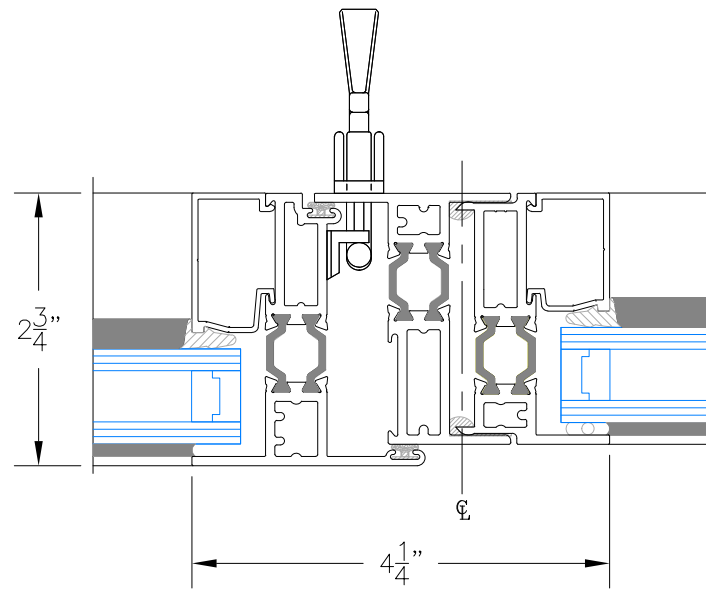
i65 SERIES THERMAL WINDOW
CASEMENT

DeSCO Architectural, Inc.
716 3rd Street SE
De Smet, SD 57231
Ph. 605-854-9126 Fax: 605-854-9127
800-952-5534
www.descoarc.com

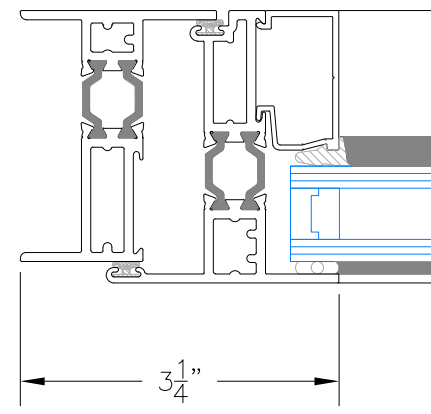




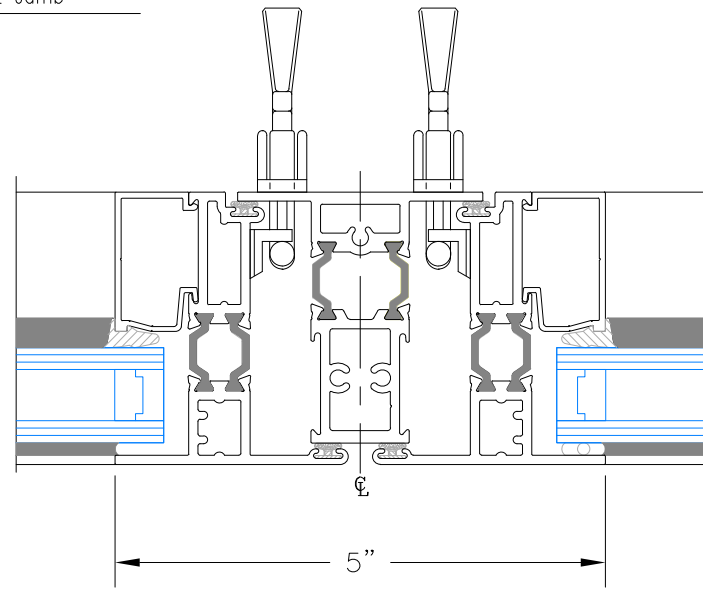
4 Vent Jamb



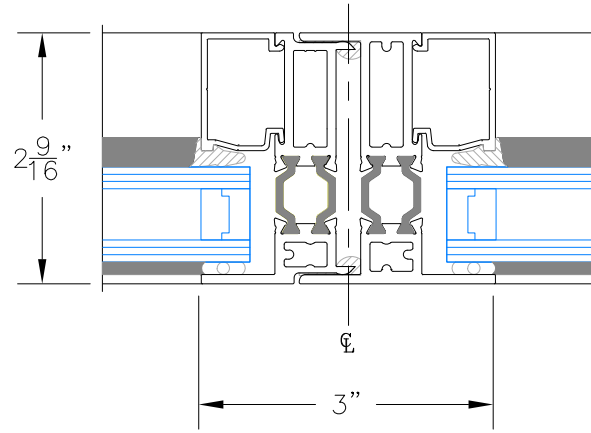
6 Vertical Vent Stack



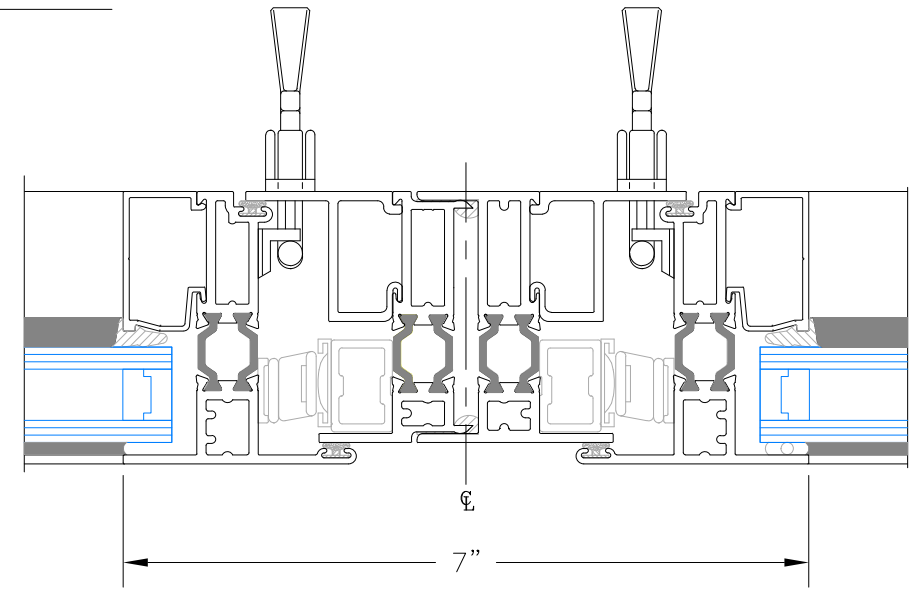
7 Vent Jamb



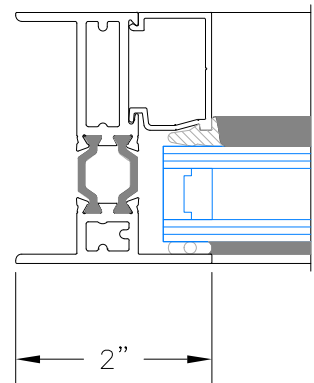
8 Vertical Mullion



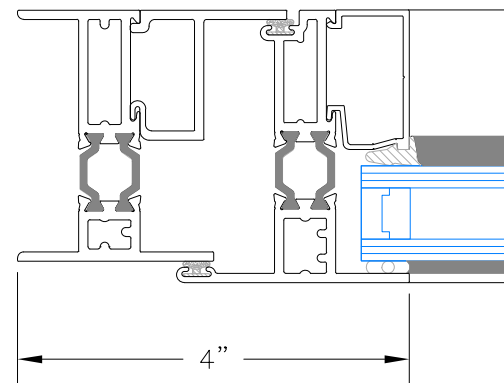
10 Vertical Stack



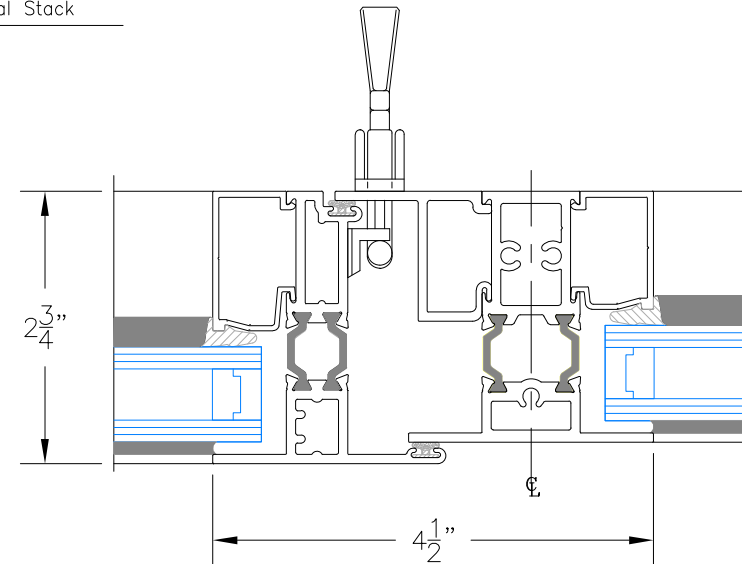
11 Vertical Stack w/P.O. Adap.



14 Jamb



15 Vent Jamb w/P.O. Adap.

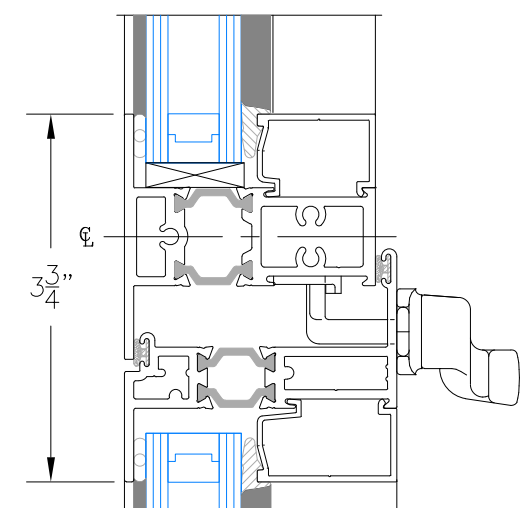
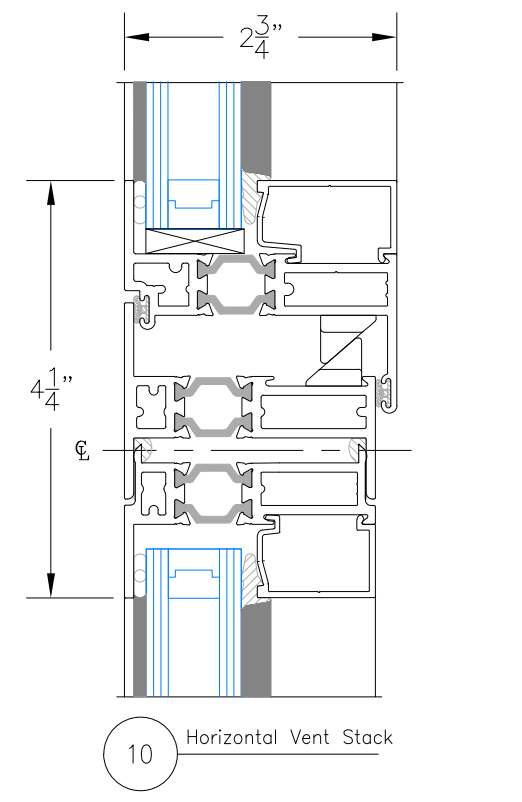
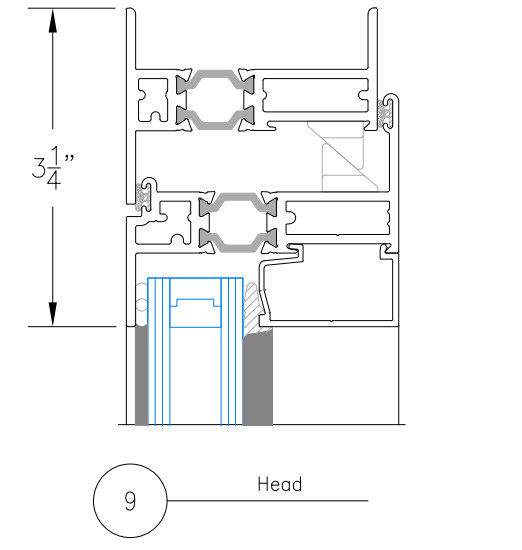
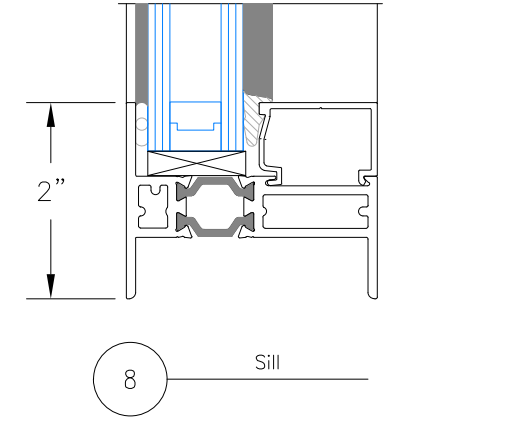
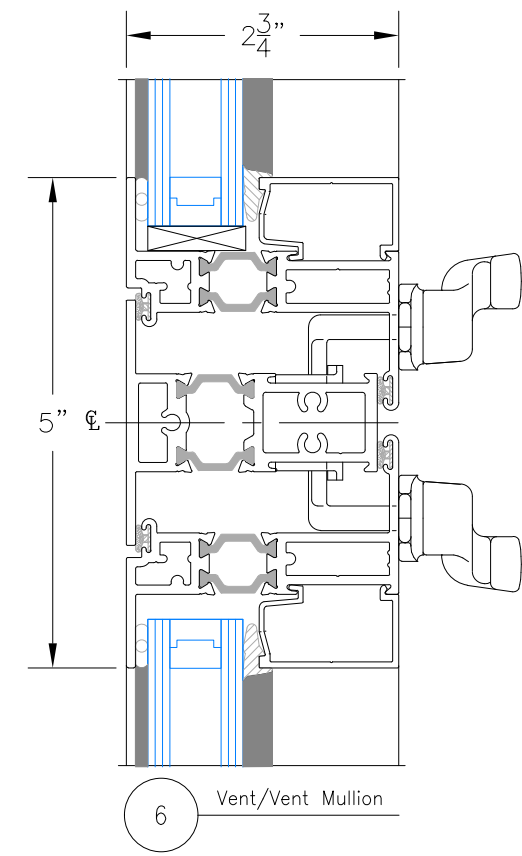
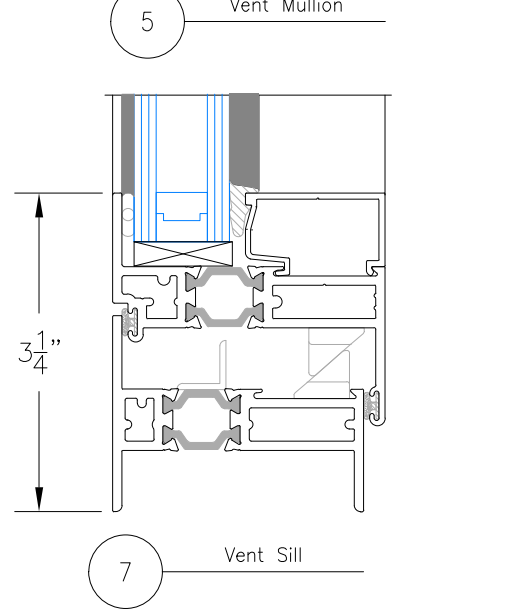
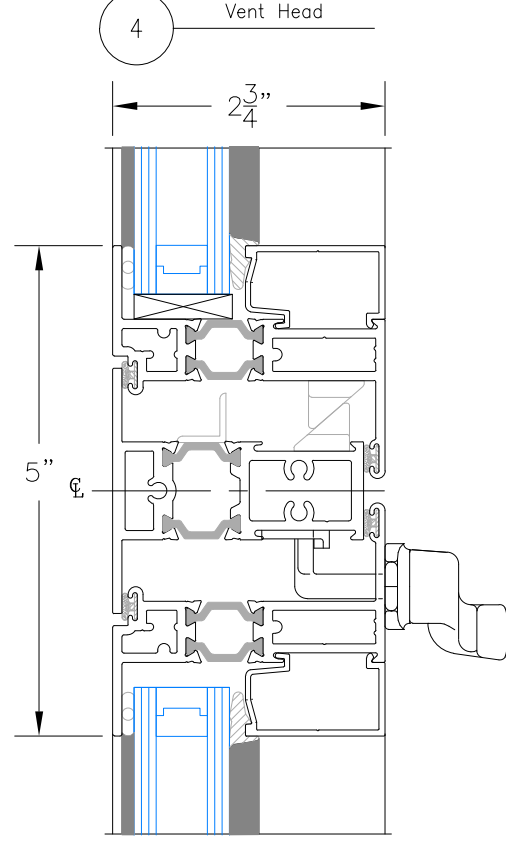
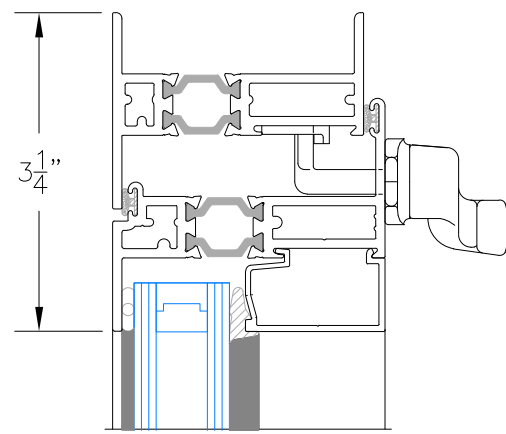
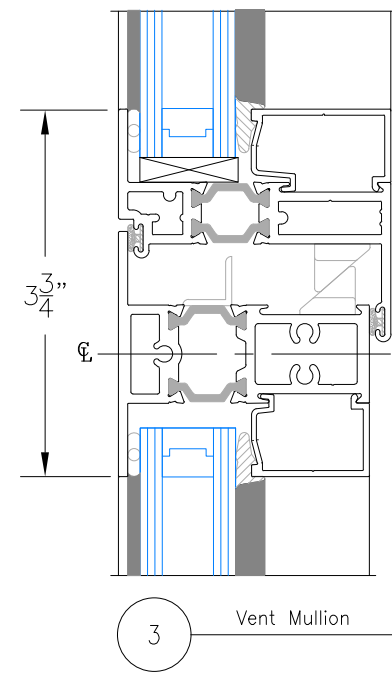
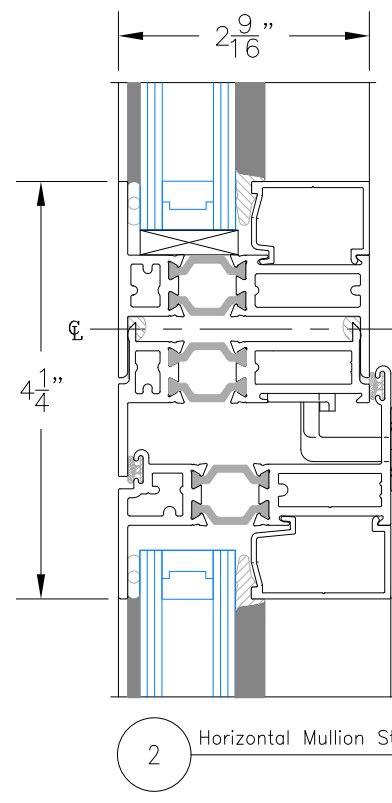
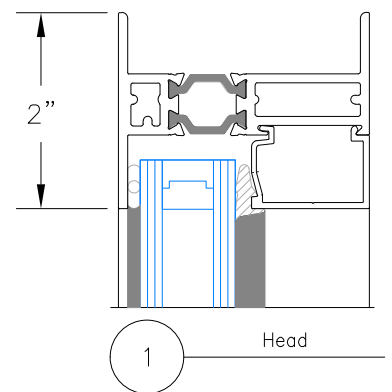
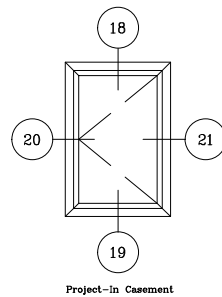
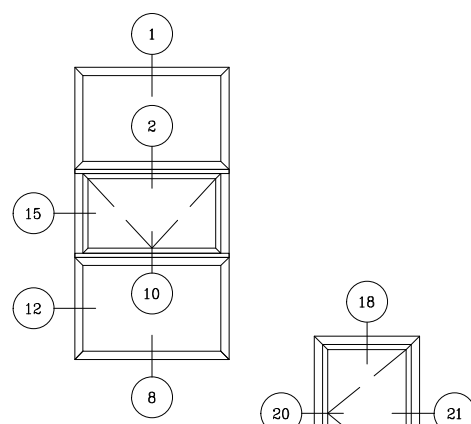
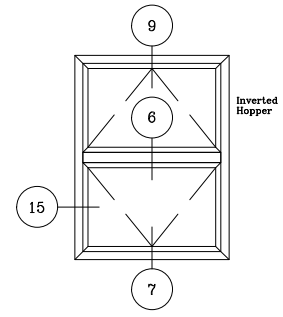
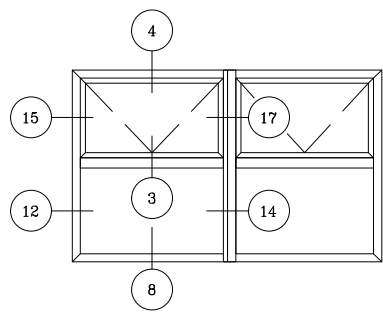
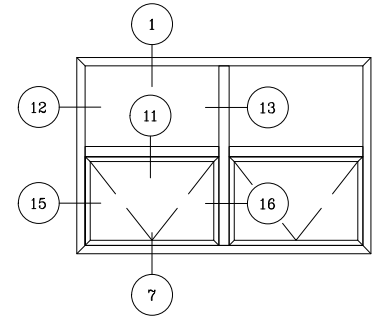
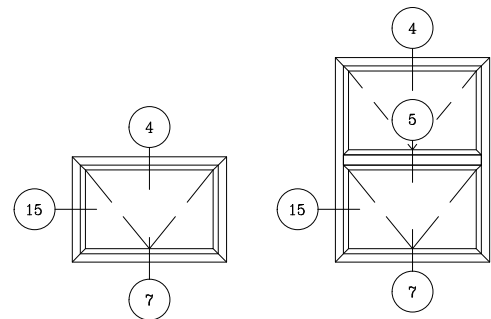


16 Vent Mullion w/P.O. Adap.

i65 SERIES THERMAL WINDOW
CASEMENT

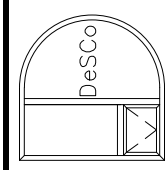
DeSCO Architectural, Inc.
716 3rd Street SE
De Smet, SD 57231
Ph: 605-854-9126 Fax: 605-854-9127
800-952-5534
www.descoarc.com

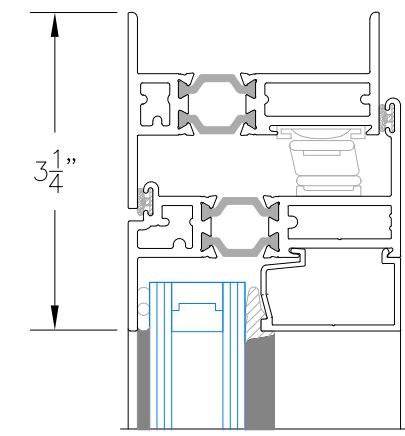




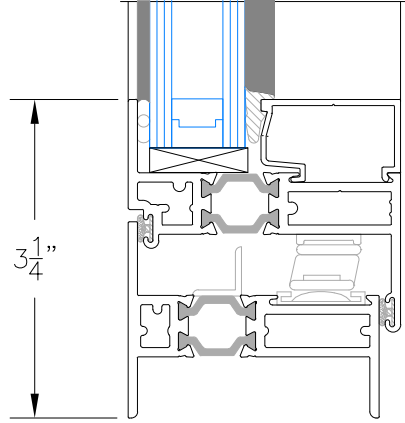
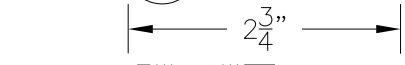
i65 SERIES THERMAL WINDOW
PROJECT-IN

DeSCO Architectural, Inc.
716 3rd Street SE
De Smet, SD 57231
Ph: 605-854-9126 Fax: 605-854-9127
800-952-5534
www.descoarc.com

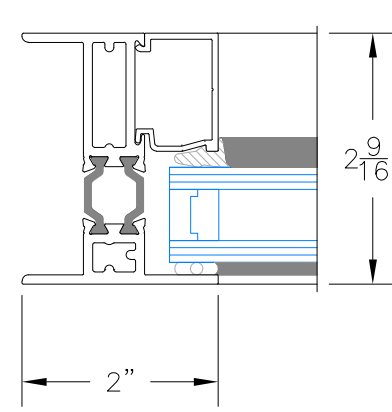




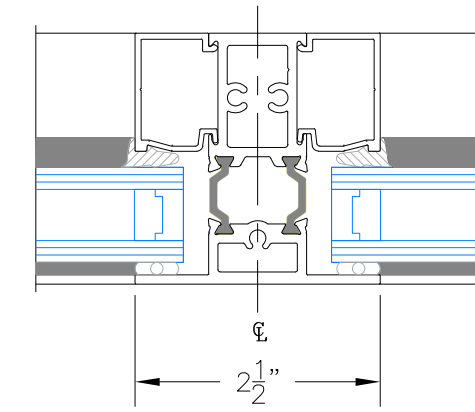
18 Vent Head



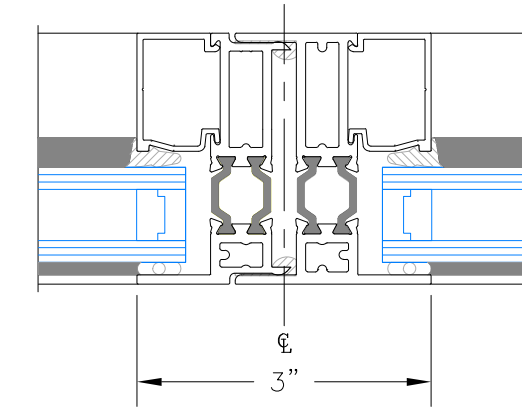
19 Vent Sill



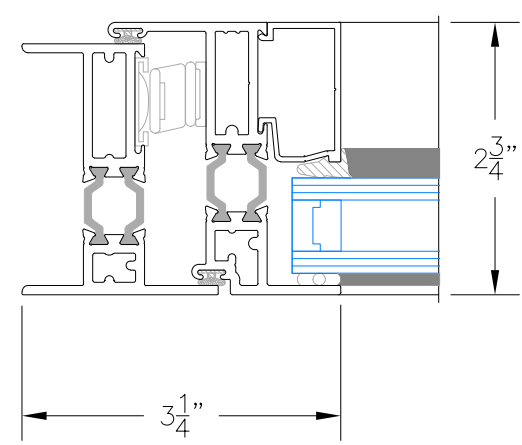
12 Jamb



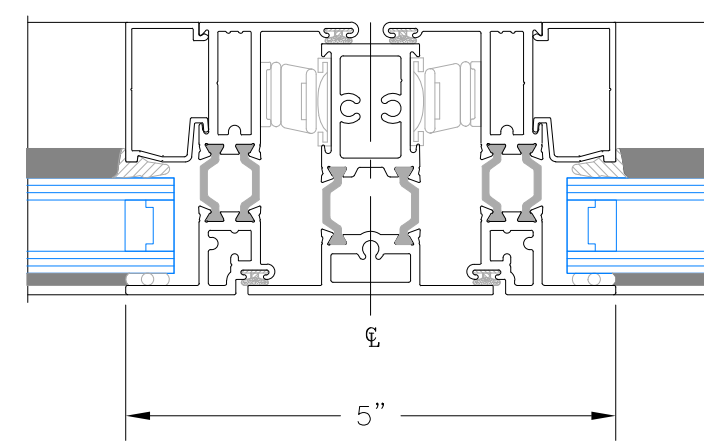
13 Vertical Mullion



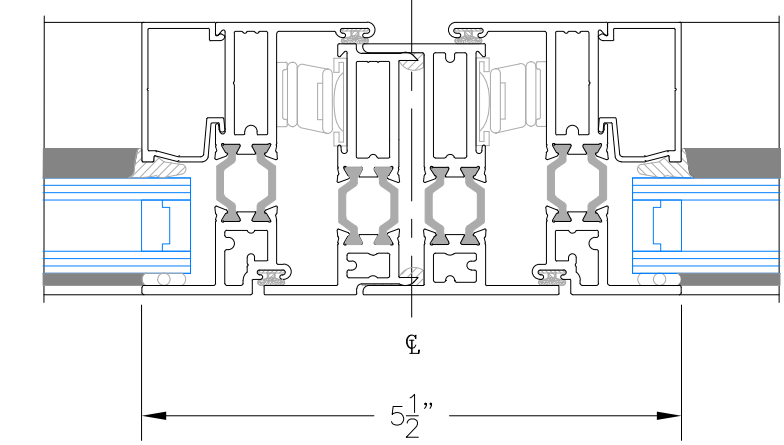
14 Vertical Stack



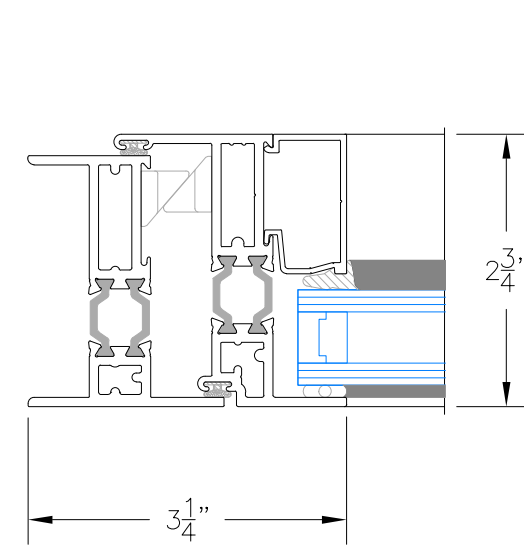
15 Vent Jamb



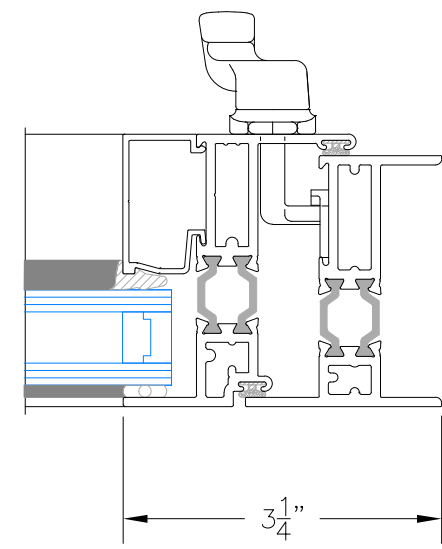
16 Vertical Vent Mullion



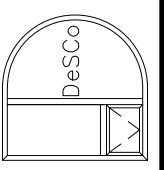
17 Vertical Stack

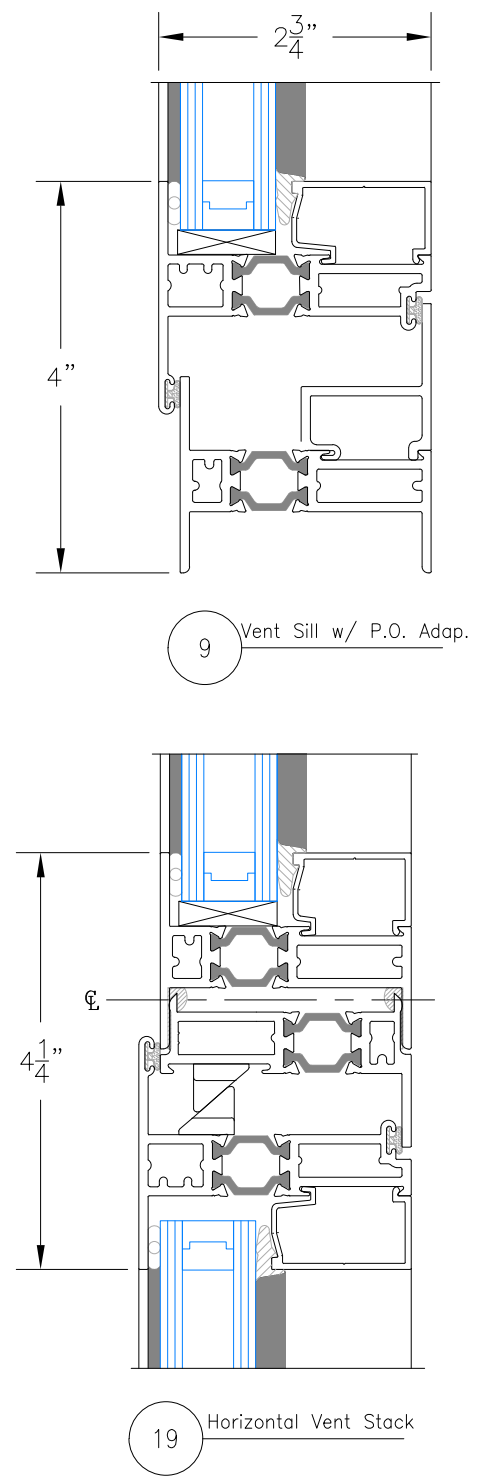
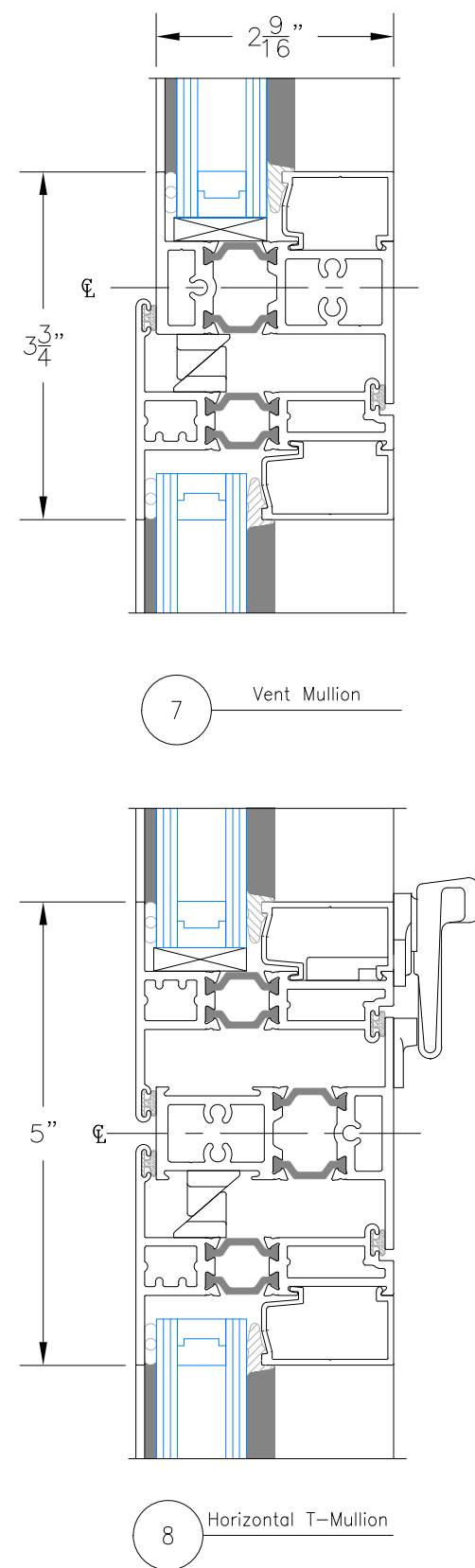
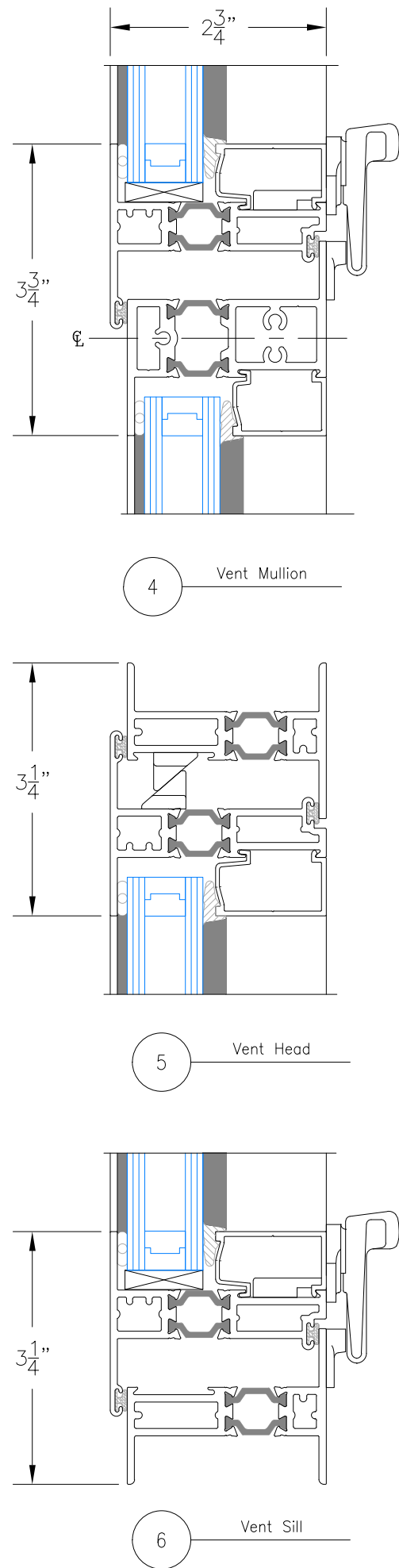
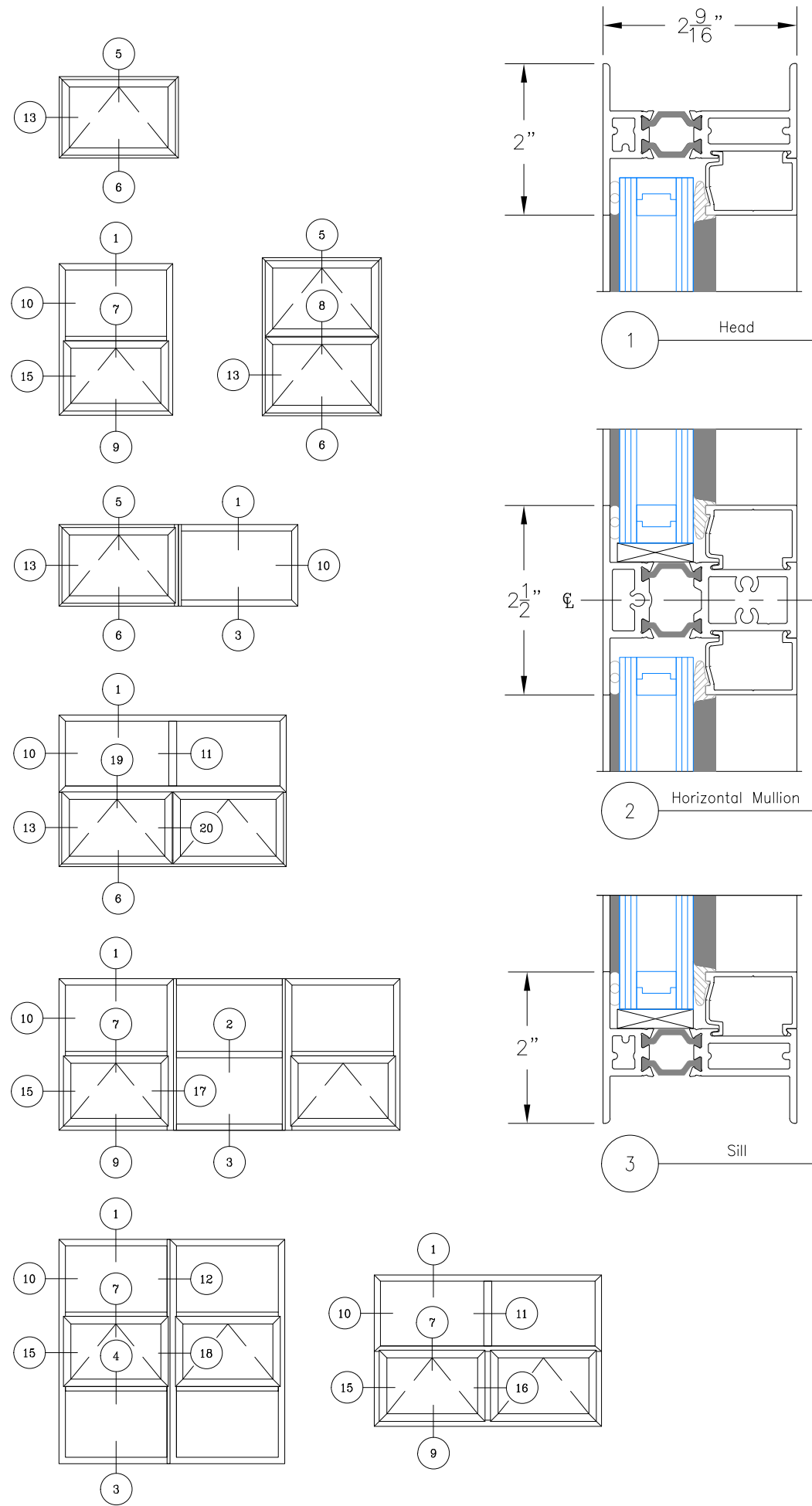


20 Vent Jamb



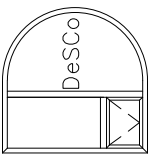
21 Vent Jamb

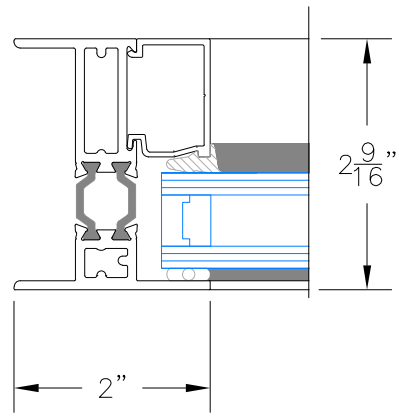




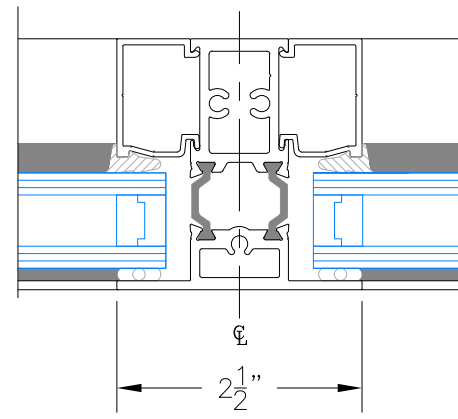
i65 SERIES THERMAL WINDOW
PROJECT-OUT

DeSCO Architectural, Inc.
716 3rd Street SE
De Smet, SD 57231
Ph. 605-854-9126 Fax: 605-854-9127
800-952-5534
www.descoarc.com

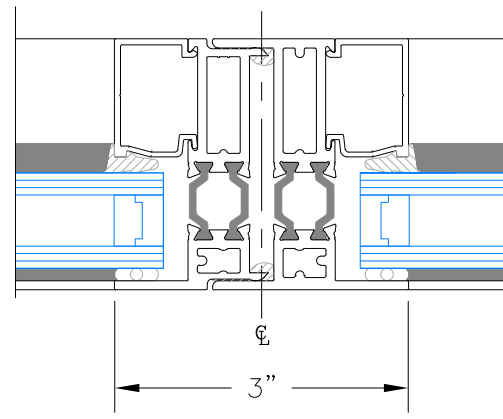




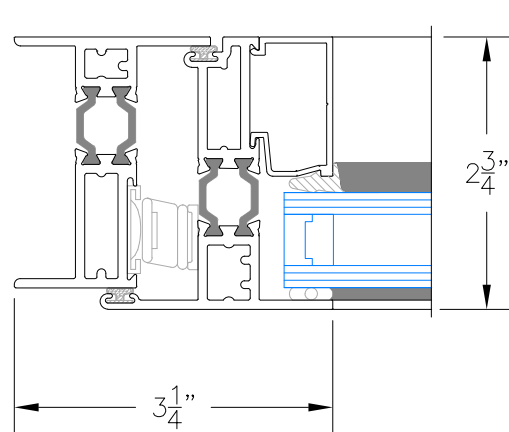
10 Jamb



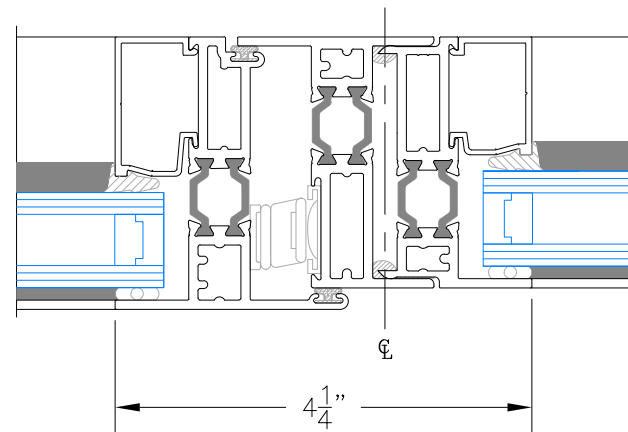
11 Vertical Mullion



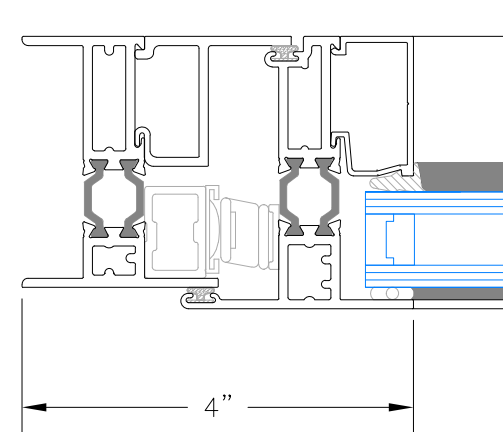
12 Vertical Stack



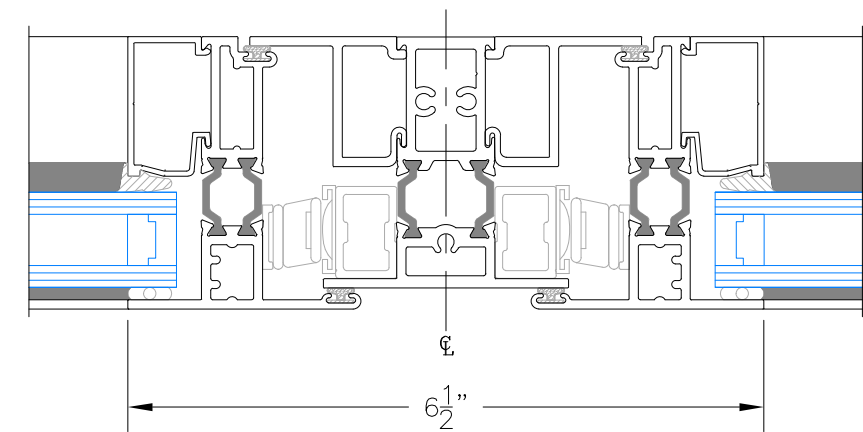
13 Vent Jamb



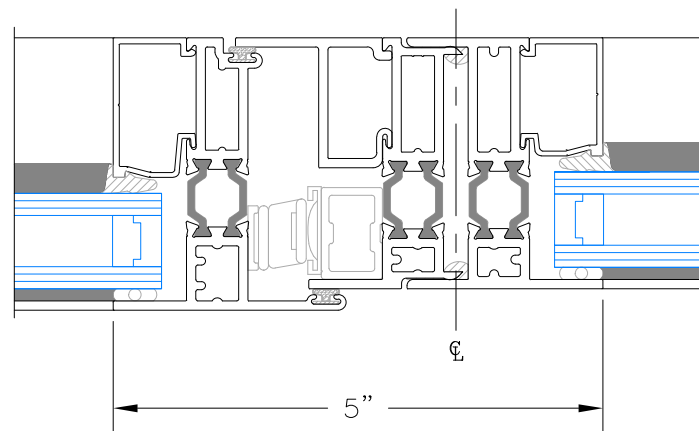
14 Vertical Vent Stack



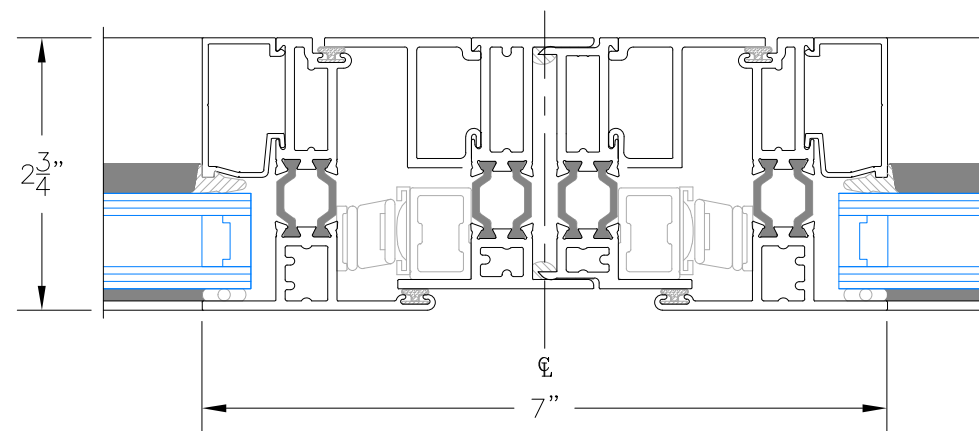
15 Vent Jamb w/P.O. Adap.



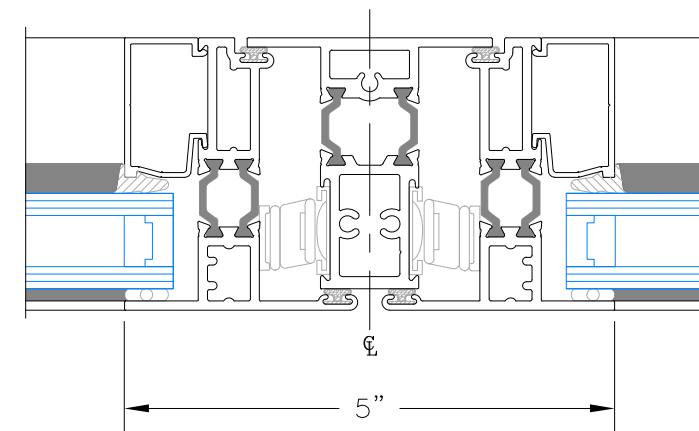
16 Vent Mullion w/P.O. Adap.



17 Vertical Stack w/P.O. Adap.



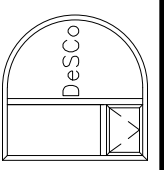
18 Vertical Stack w/P.O. Adap.

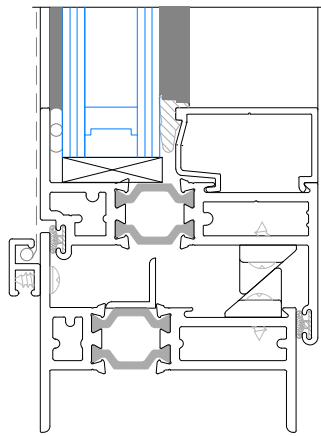


20 Vertical Mullion

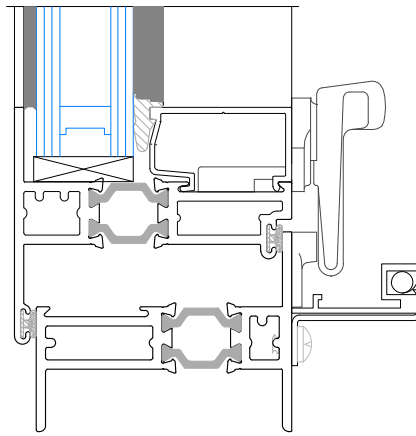
i65 SERIES THERMAL WINDOW
PROJECT-OUT

DeSCO Architectural, Inc.
716 3rd Street SE
De Smet, SD 57231
Ph: 605-854-9126 Fax: 605-854-9127
800-952-5534
www.descoarc.com

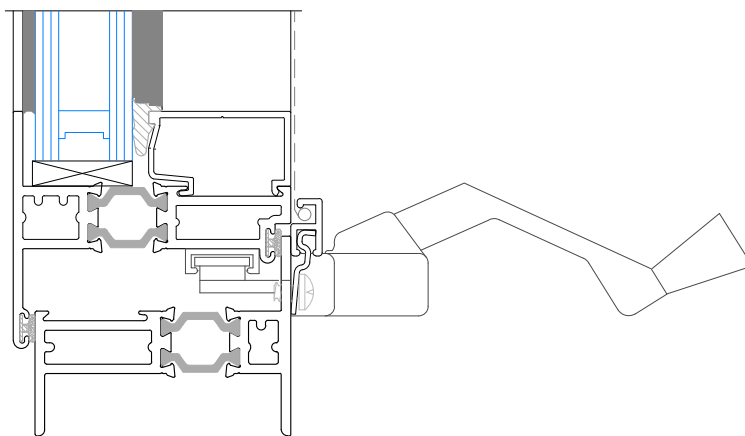




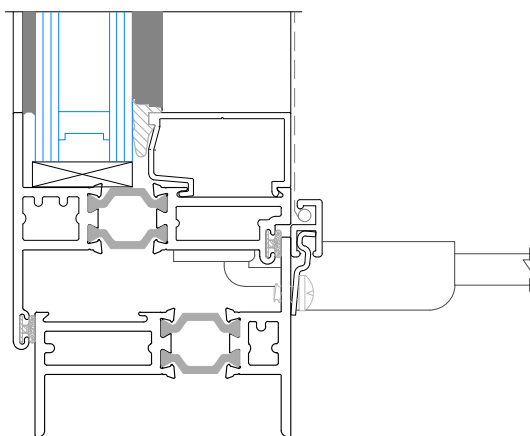
Project-In
Screen



Project-Out
Wicket Screen
W/Cam Handle



Project-Out
Screen
W/Roto
Operator

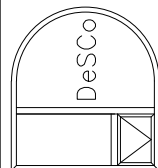


Project-Out
Screen
W/Pushbar

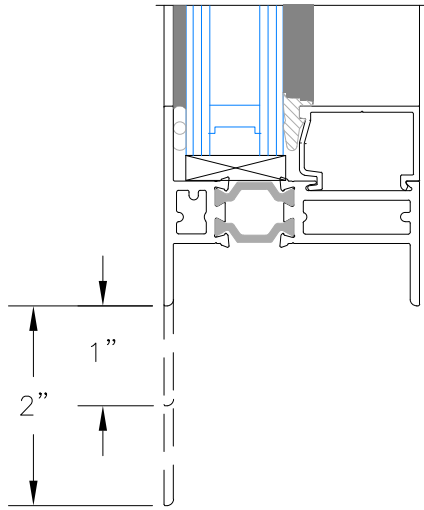
Scale: Half Scale

165 SERIES ACCESSORIES

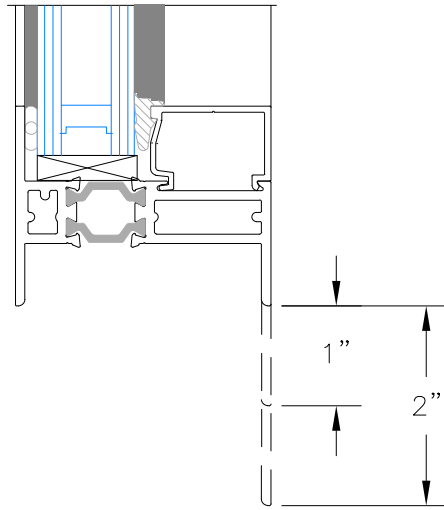
DeSCO Architectural, Inc.
716 3rd Street SE
De Smet, SD 57231
Ph. 605-854-9126 Fax: 605-854-9127
800-952-5534
www.descoarc.com



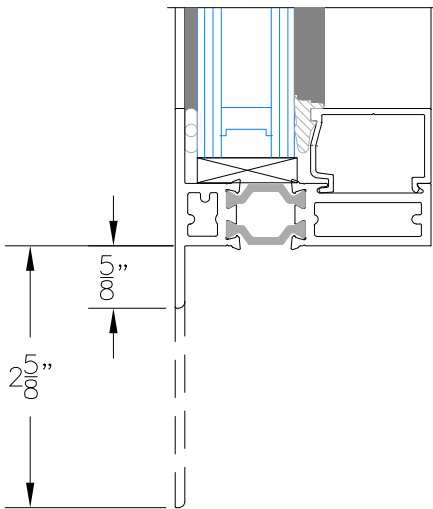
Exterior
Unequal Leg
Options



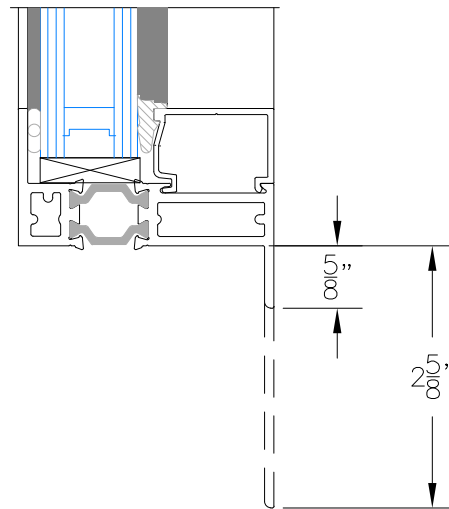
Interior
Unequal Leg
Options



Exterior
Unequal Leg
Options

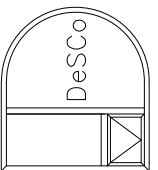


Interior
Unequal Leg
Options

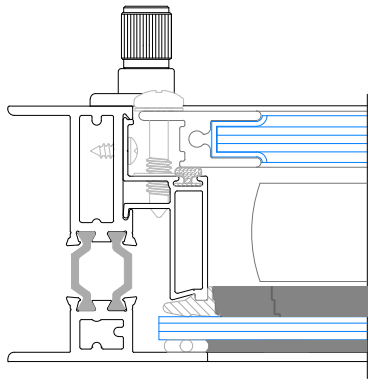


165 SERIES ACCESSORIES (Con't)

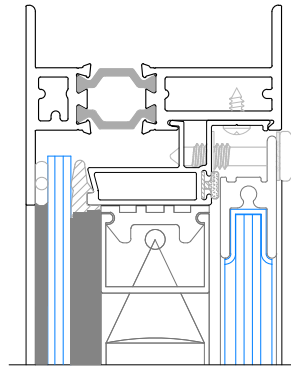
DeSCO Architectural, Inc.
716 3rd Street SE
De Smet, SD 57231
Ph. 605-854-9126 Fax: 605-854-9127
800-952-5534
www.descoarc.com



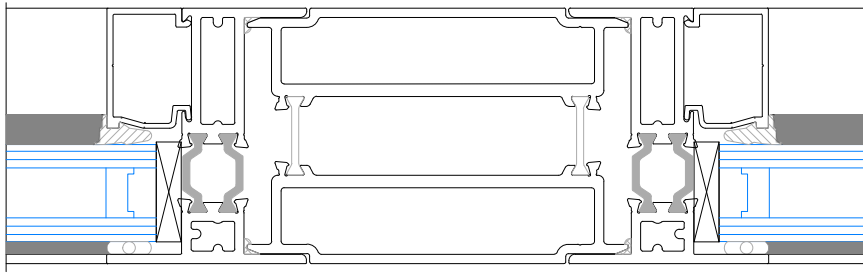
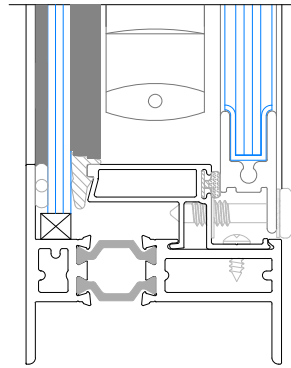
Scale: Half Scale



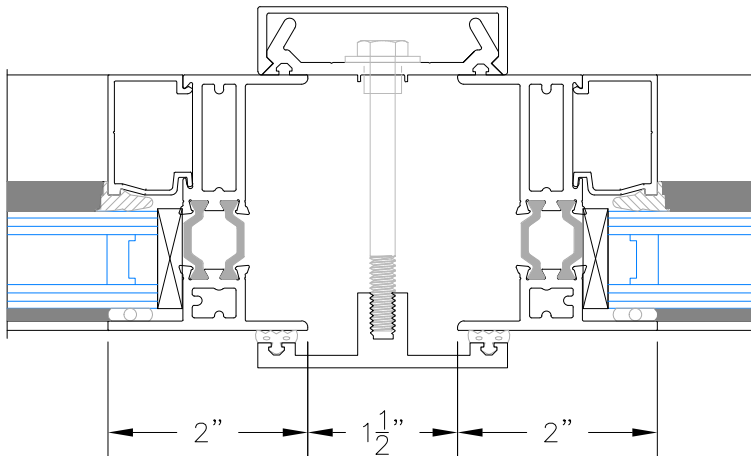
i65 Series
With Blinds
Jamb Detail



i65 Series
With Blinds
Head Detail



Wide Mullion

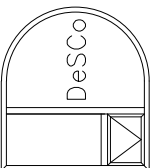


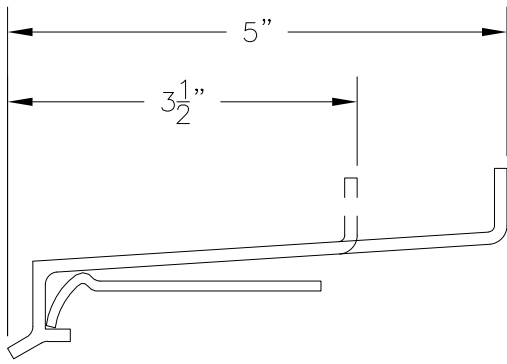
2 Piece Mullion Cover

Scale: Half Scale

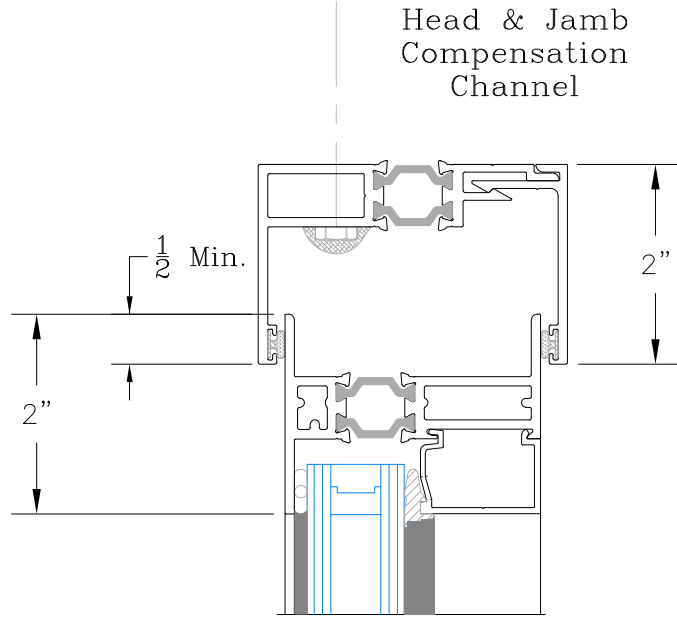
165 SERIES ACCESSORIES (Con't)

DeSCO Architectural, Inc.
716 3rd Street SE
De Smet, SD 57231
Ph. 605-854-9126 Fax: 605-854-9127
800-952-5534
www.descoarc.com

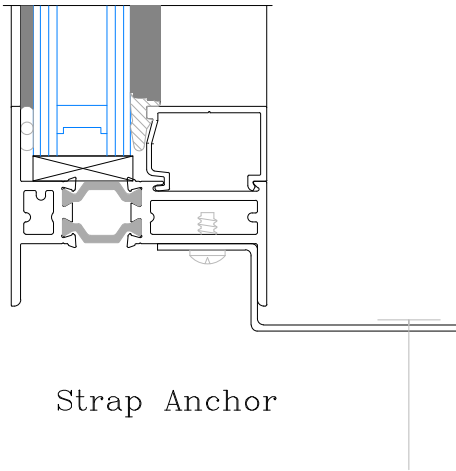




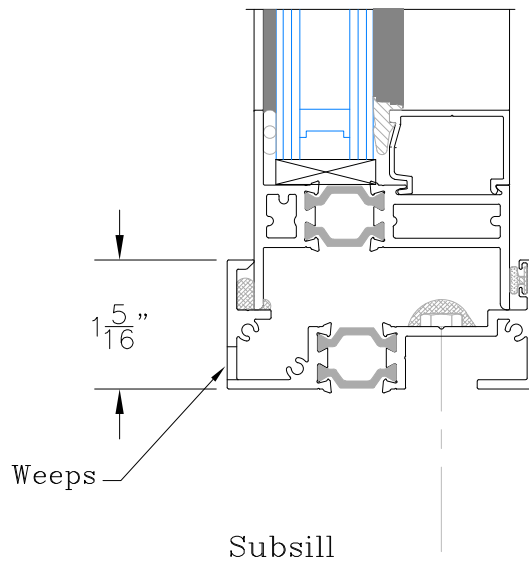
Extruded Sill



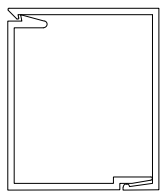
Head & Jamb Compensation Channel



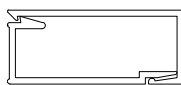
Strap Anchor



Subsill



1 1/2" x 1 3/4"
Snap Trim



1 3/4" x 3/4"
Snap Trim

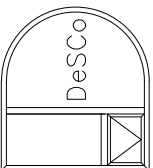


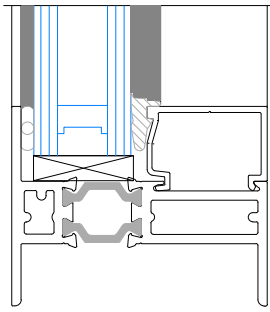
3 1/2" x 1"
Snap Trim

Scale: Half Scale

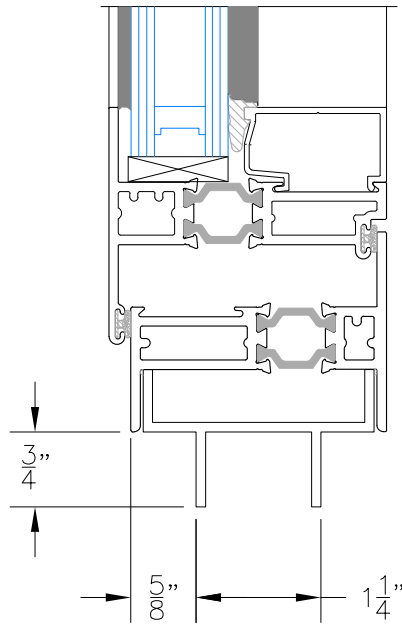
165 SERIES ACCESSORIES (Con't)

DeSCO Architectural, Inc.
716 3rd Street SE
De Smet, SD 57231
Ph. 605-854-9126 Fax: 605-854-9127
800-952-5534
www.descoarc.com

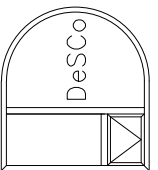




1" Glazing



PVC
Storefront Adapter



DeSCO Architectural, Inc.
716 3rd Street SE
De Smet, SD 57231
Ph. 605-854-9126 Fax: 605-854-9127
800-952-5534
www.descoarc.com

165 SERIES ACCESSORIES (Con't)